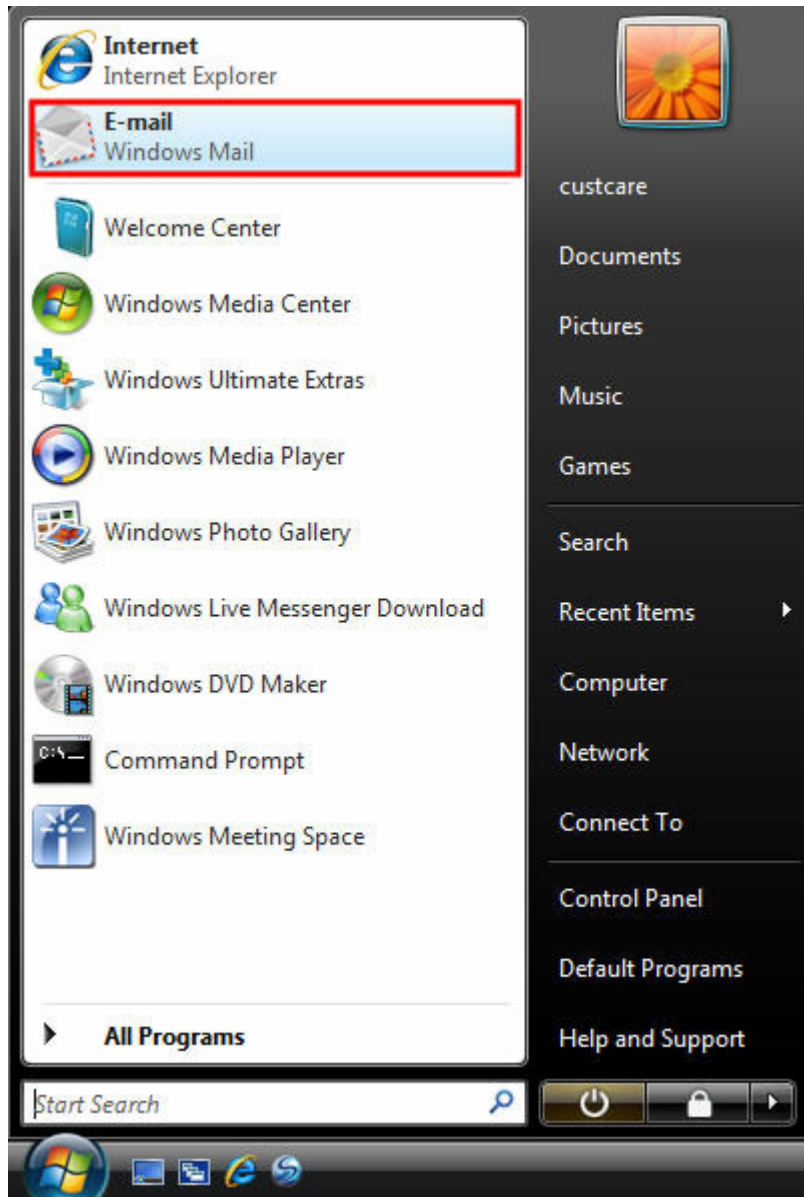


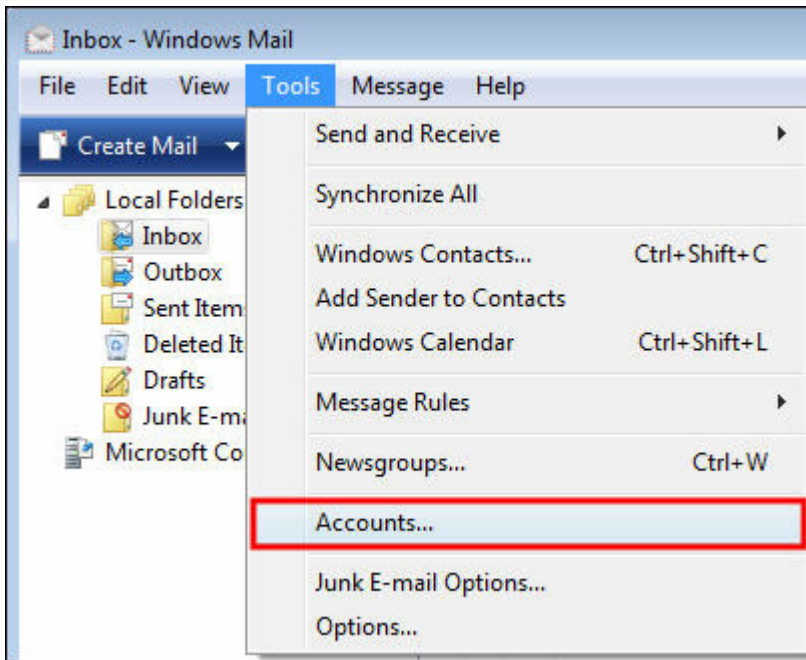
Setting up a Lucidity hosted email account in Windows Mail

To Set Up Your E-mail Account in Microsoft Outlook

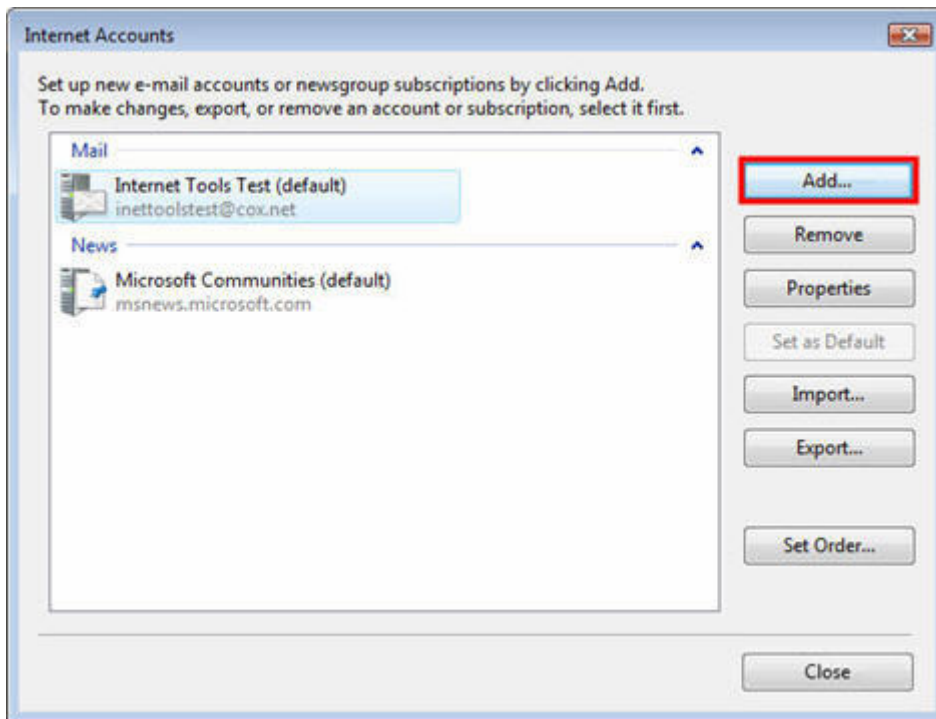
1. From the Start menu, click the E-mail Windows Mail icon.



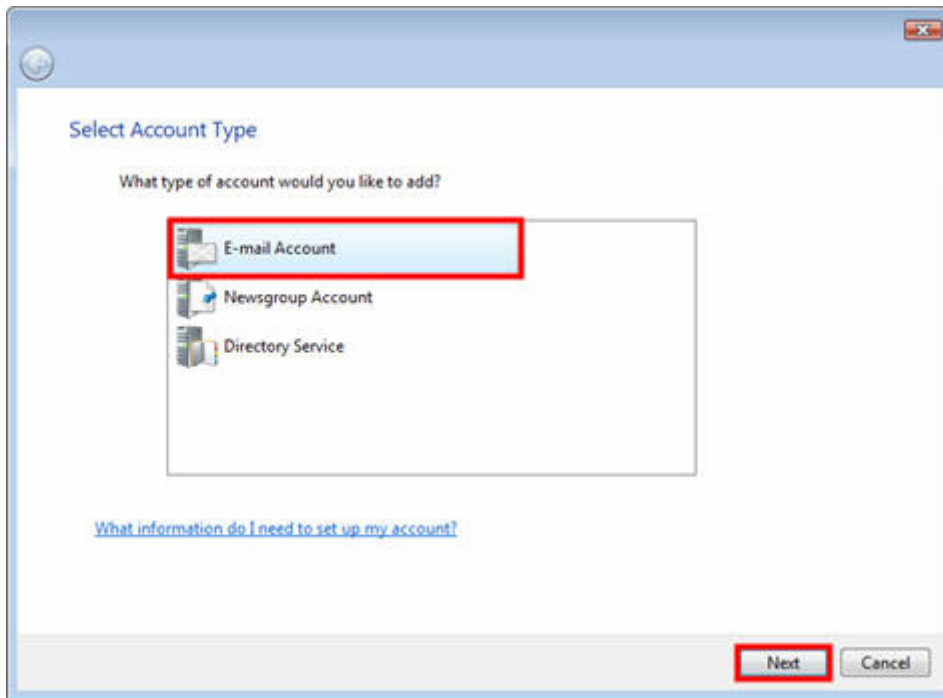
2. Click Tools, then select Accounts



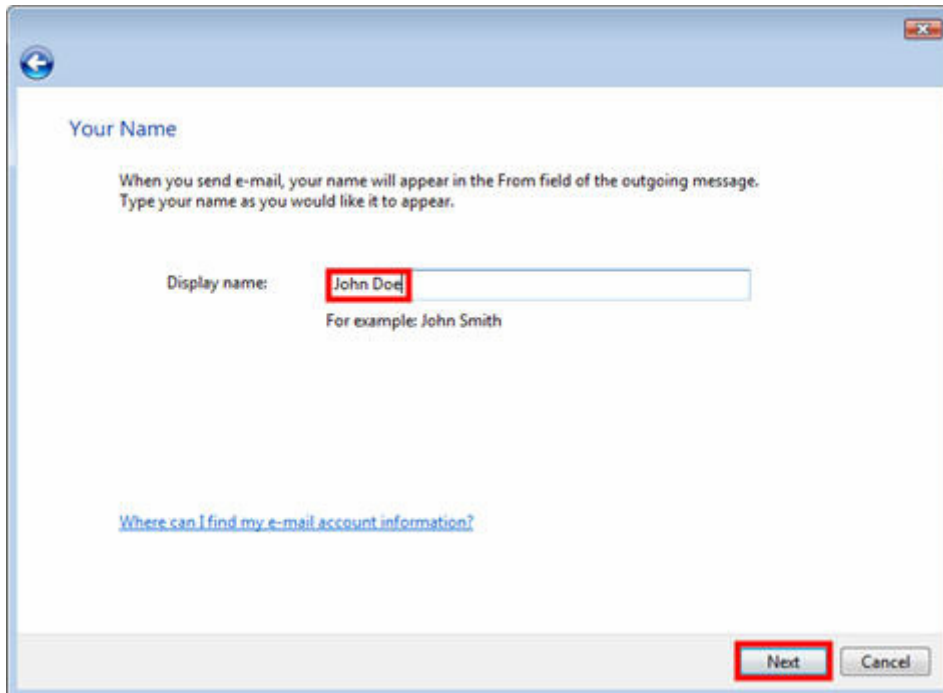
3. In the Internet Accounts window, click Add.



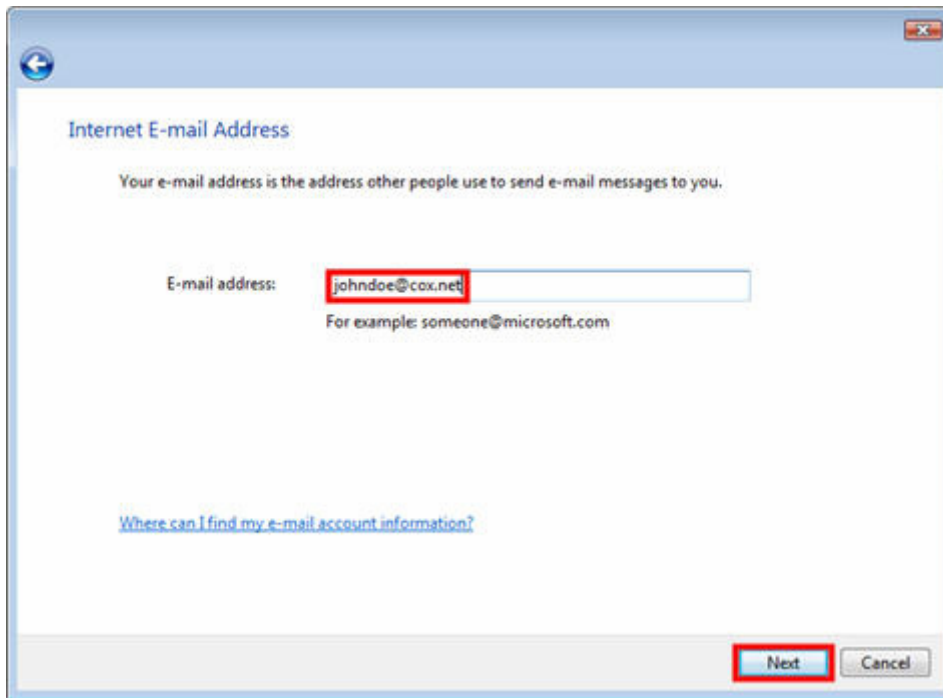
4. Select E-mail Account, then click Next.



5. Enter Display name, then click Next.

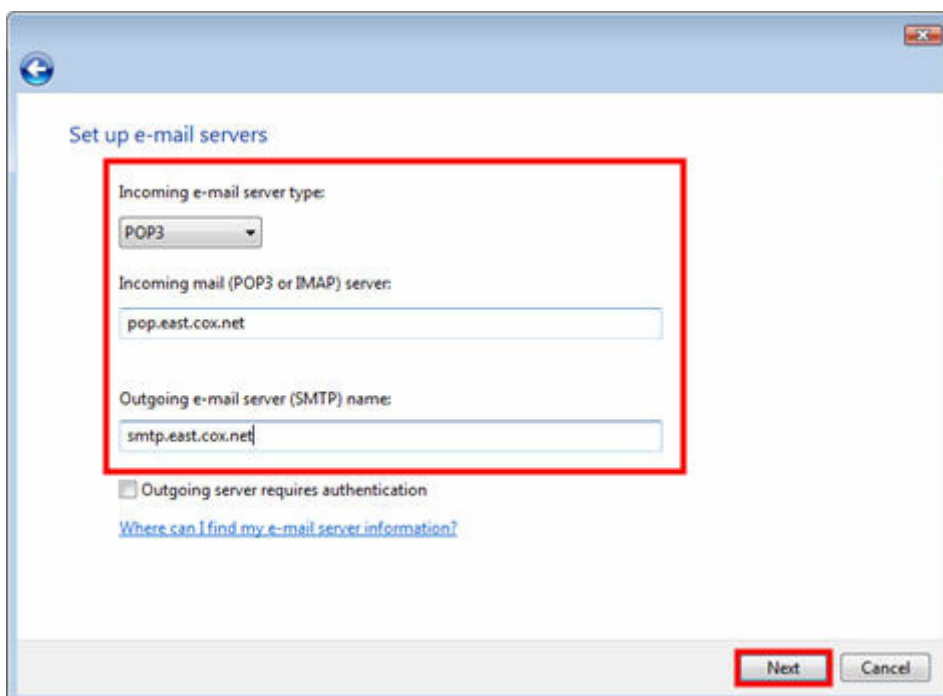


6. Enter E-mail address, then click Next.



7.

- a. Select POP3 from the drop down menu.
- b. Incoming mail server: mail.youdomain.ie
- c. Outgoing e-mail server: Your ISP's SMTP server
 - a. i.e. Eircom Users enter mail1.eircom.net
- d. Click Next.



8.

- a. Enter E-mail username.
- b. Enter Password.
- c. Select or deselect the Remember password box, depending on preferences.
- d. Click Next.

Internet Mail Logon

Type the account name and password your Internet service provider has given you.

E-mail username: johndoe

Password: *****

Remember password

Next Cancel

9. Click "Finish" on the final screen